



KIT PART NUMBERS 4114098 AND 4114100

INSTRUCTIONS FOR INSTALLING A TROPICAL DRAIN PAN HEATER IN A MODEL 411 ICE CREAM CENTER

NOTE: This kit may only be used on models with welded $\frac{5}{8}$ O.D. aluminum tube, drain pan (4114084)

CHECK THE PARTS RECEIVED IN THE KIT WITH THE PARTS LIST IN THESE INSTRUCTIONS. IF ANY PARTS ARE MISSING, CONTACT THE NATIONAL VENDORS PARTS DEPARTMENT IMMEDIATELY.

Read these instructions carefully before installing the kit.
Keep these instructions for part numbers and for future reference.

This kit contains the following:

INDEX	PART NUMBER	DESCRIPTION	QUANTITY
1	4114096	HEATER ASSEMBLY - DRAIN PAN AUXILIARY - 115 V	1
	4114099	HEATER ASSEMBLY - DRAIN PAN AUXILIARY - 230 V	
2	4114097	HARNESS - HEATER - DRAIN PAN	1
3	4110046	INSTALLATION INSTRUCTIONS	1

Proceed as follows:

1. Turn the main power switch OFF. Unplug the machine.
2. If necessary, remove and store contents of the machine.
3. Remove the rear cover and gain access to the evaporator housing.
4. Face the front of the machine with the door open. Observe the wiring harness from the controller to the rear of the machine, routed through the upper left corner.
5. Using the best means available, insert the drain pan heater harness (2) from the front to the rear of the machine, following the route of the existing wiring harness.
6. (See figure 1.) Remove the control panel cover from the controller assembly.
7. Unplug connector J20. Plug the two halves of J20 into the connectors at the end of the drain pan heater harness (2). Secure the new wiring harness under the cable clamp as shown.
8. Replace the control panel cover.
9. (See figure 2.) Clean the area where the heater will be installed. Peel adhesive backing from the heater (1), then apply it to the location as shown. Install the heater retainers (4) over the heater as shown.
10. Drill a $\frac{1}{8}$ " hole in the location shown.
11. Mount the thermostat (5) as follows:
 - a. Bend tab on thermostat about 45° .

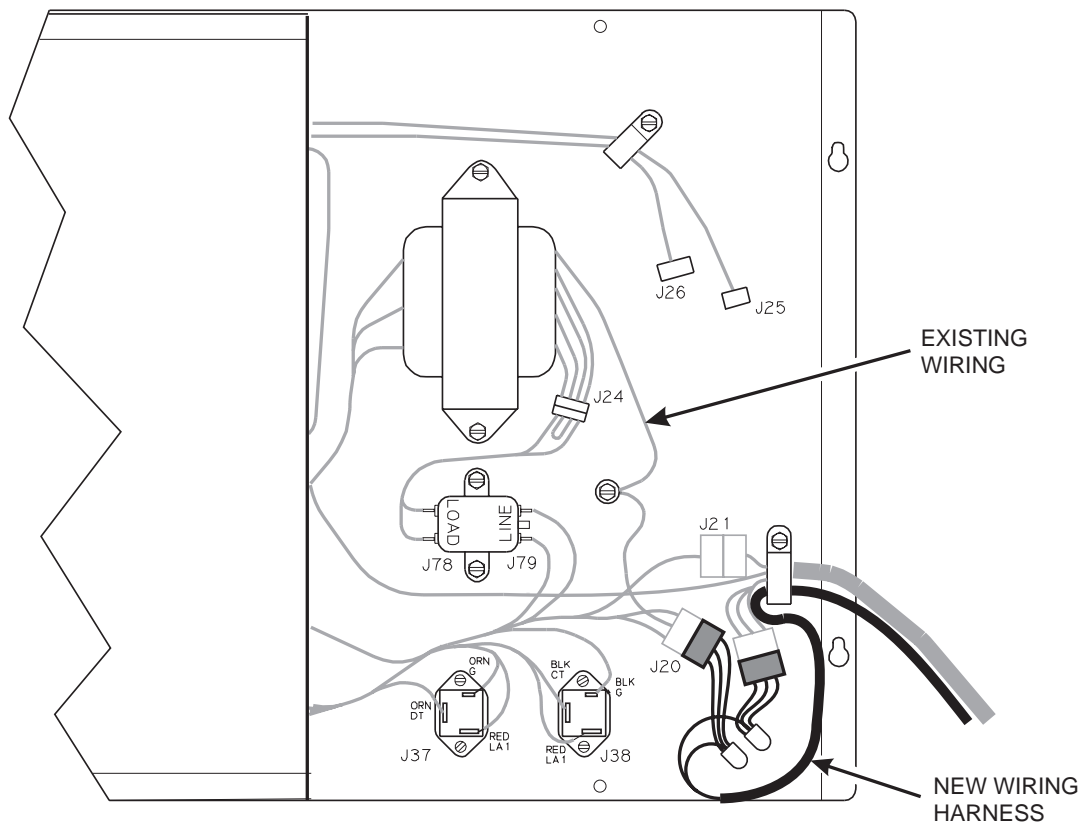
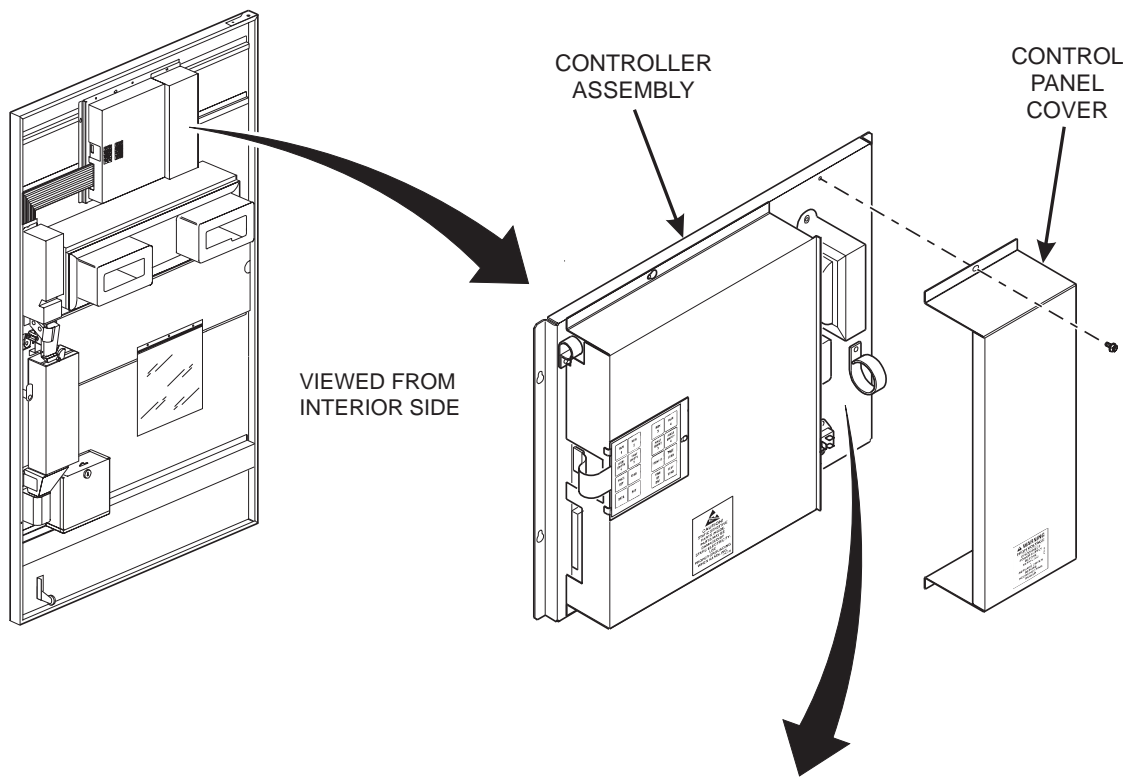
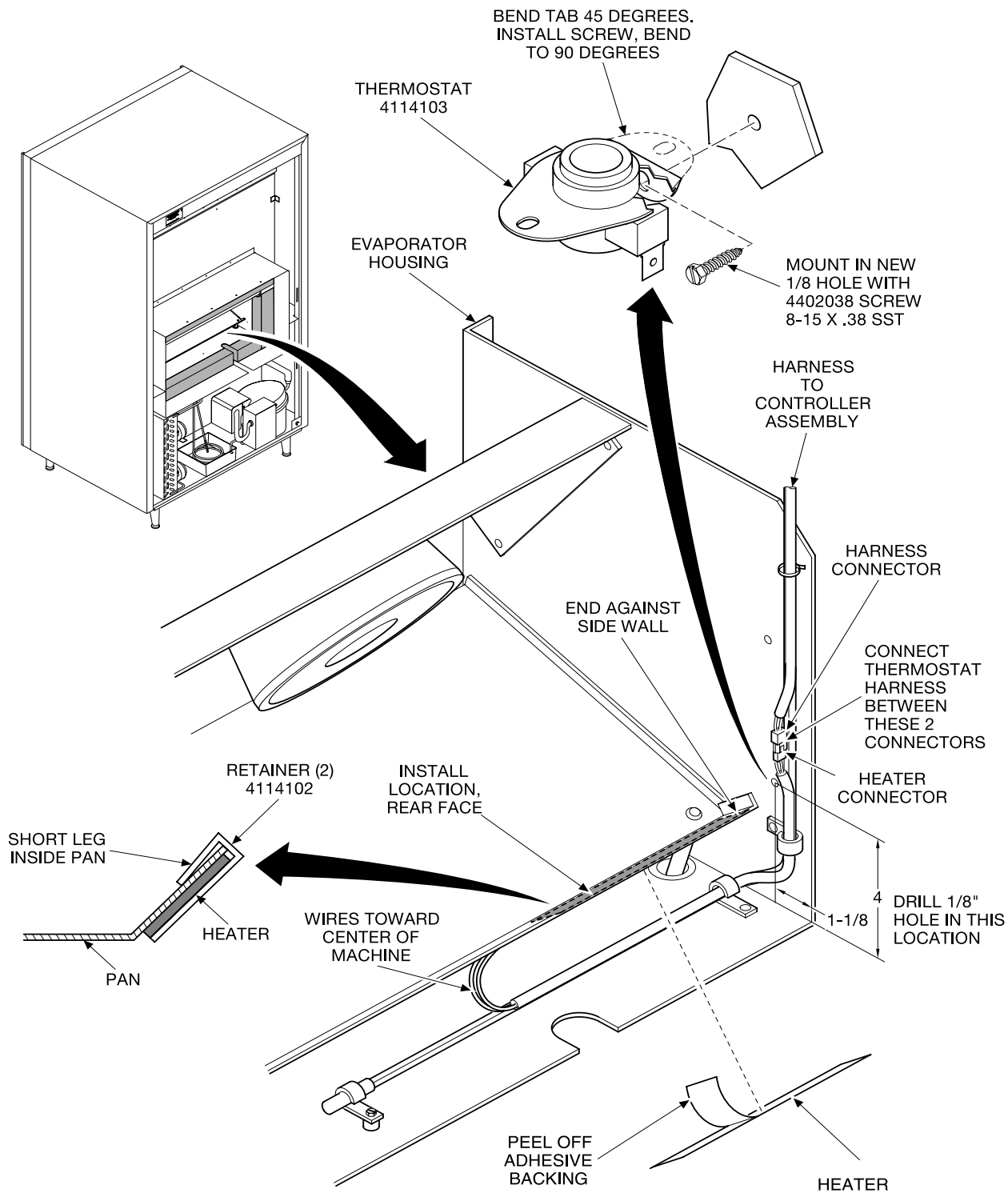


Figure 1



-
- b. Mount the thermostat using one screw (7). Bend the tab back 90° as shown.
 12. Route the drain pan heater harness down the inside of the machine, and through the cutout in the evaporator housing. Imbed the harness in the permagum insulation similarly to the existing wiring.
 13. Route the wiring from the heater to the wiring harness as shown. Secure the wiring with the cable clamps and wire ties (8).
 14. Connect the thermostat harness (6) to the thermostat lugs, and then between the two connectors as shown.
 15. Plug the heater connector into the harness connector.
 16. Replace the evaporator housing cover and the rear machine cover.
 17. Apply power to the machine, and turn on the power. The heater will be on whenever the main power switch is turned on.
 18. After the machine reaches its operating temperature, restock the product.



411pk009

Figure 2